



Olar

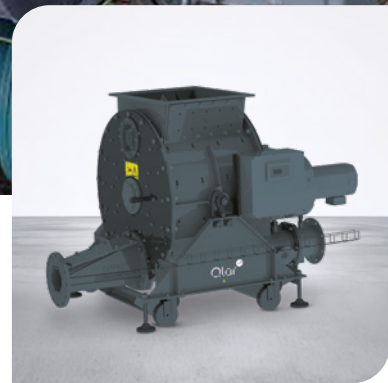
Recommended spare parts for your maintenance plan

→ **MultiCell AF blow-through rotary valve**



Driving **circular**
transformation

- Highest plant availability through quick replacement possibilities
- Easy replacement through modular design solution
- Spare units allow fastest issue resolution and quickest return on investment



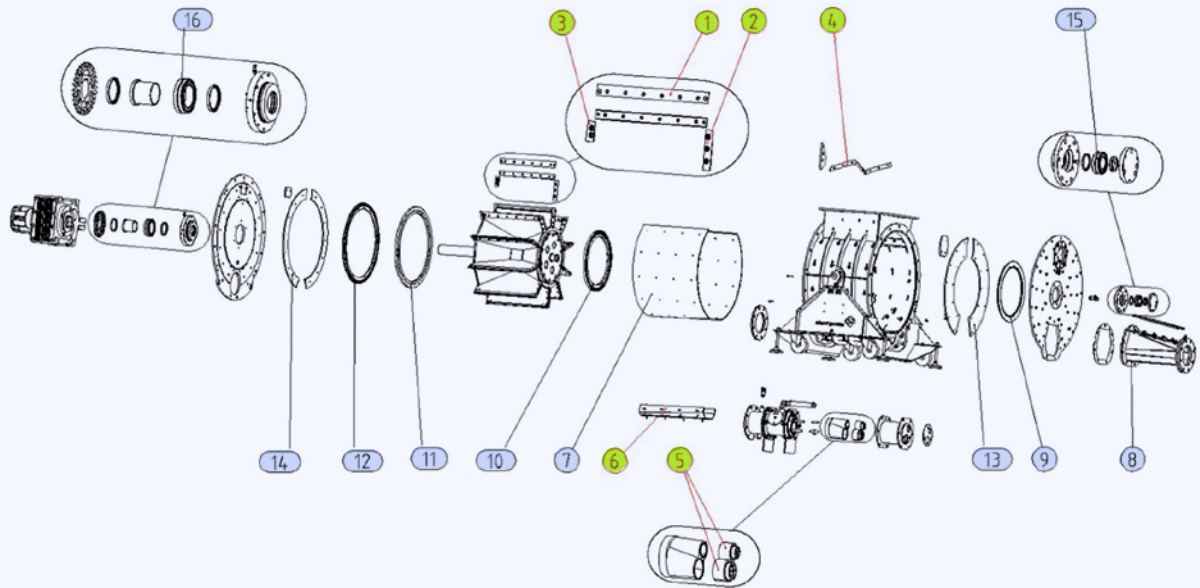
Your MultiCell AF

The MultiCell AF blow-through rotary valve has been specially designed and developed for the in-line feeding of non-homogeneous alternative fuels into pneumatic conveying systems within the cement, lime, gypsum and power industries.

Robust in design and performance the MultiCell AF is capable of feeding a wide range of alternative fuels including shredded plastics, foil chips, conditioned sewage sludge, wood chips and saw meal, palm kernel shells, rice husk, animal meal and various mixed combinations.

The MultiCell AF blow-through rotary valve is used as a feeding device to directly feed of non-homogeneous alternative fuels into pneumatic conveying lines at conveying pressures of up to 350 mbar.

The geometry of the unit's inlet, chambers, conveying channel and outlet guarantee efficient material flow into the pneumatic conveying line thus a high material conveying to air ratio is achieved.



The **spare parts summary** provides a brief overview of recommended stock quantities to enable quick response times for your maintenance team and

highlights any critical spare parts. Any unforeseen defect of critical parts listed below will inhibit productive use of the equipment until the part is replaced.

	Item number	Recommended stock quantities	
		Spare parts	Critical parts
Hard seal knife	1		1 set
Side knives of bearing	2		1 set
Side knives of motor	3		1 set
Knives of scraper	4		1 set
Nozzles	5		1 set
Lining of trough	6		1 set
Circular lining	7	1 set	
Blow out socket	8	1 pc	
Labyrinth 2	9	1 pc	
Labyrinth rotor bearing side	10	1 pc	
Labyrinth rotor motor side	11	1 pc	
Labyrinth 1	12	1 pc	
Lining of bearing flange	13	1 set	
Lining of motor flange	14	1 set	
Bearing 2	15	1 pc	
Bearing 1	16	1 pc	

Maintenance summary

This **maintenance summary** provides a brief overview of inspection & maintenance actions. Please find any further details in the corresponding manual BVH2626.

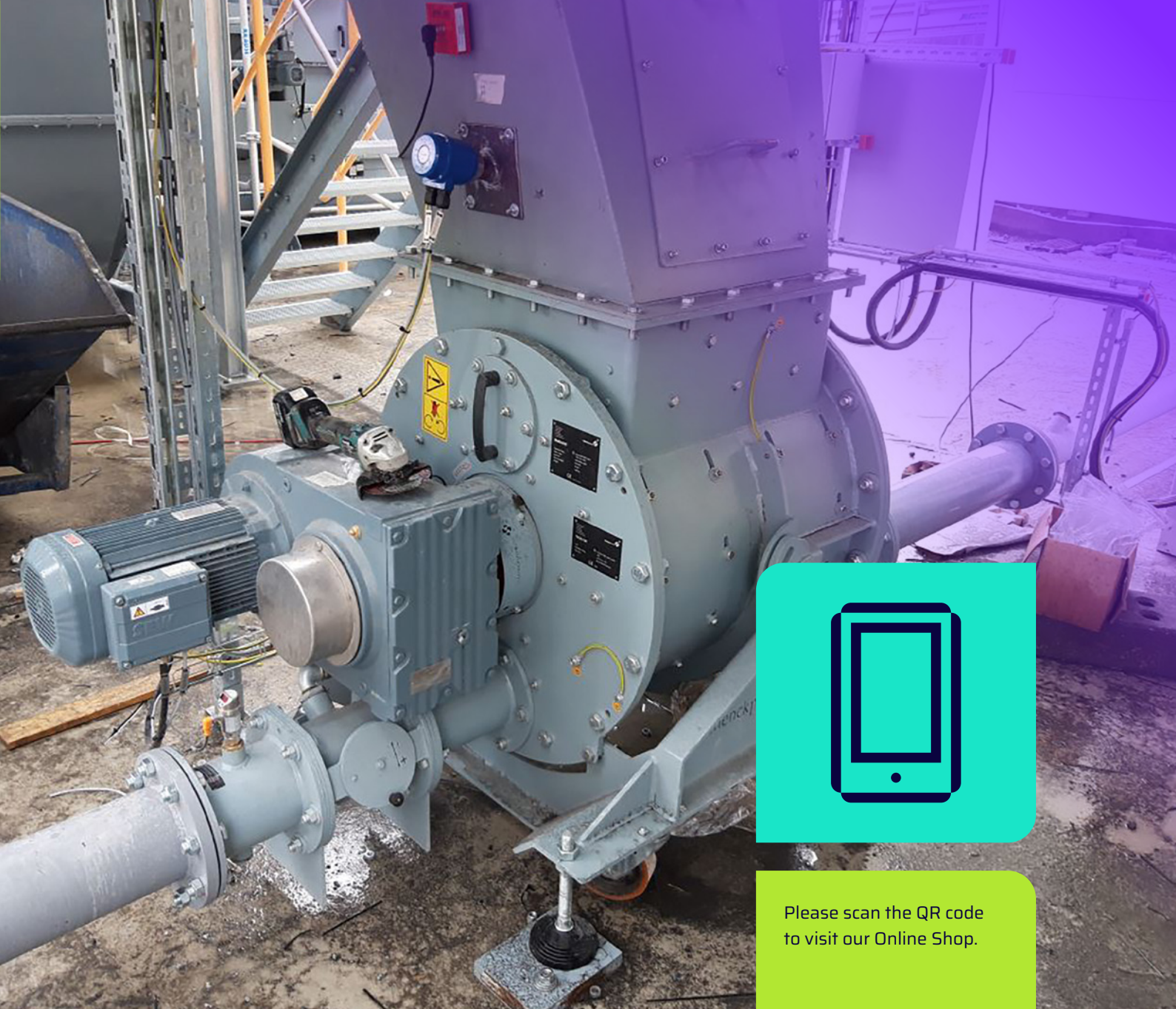
Inspection & maintenance intervals should be followed carefully to ensure ideal operation of the equipment.

	Recommended frequency	Trigger	Action
Rotor and gear drive	Regularly	Grinding noises	Stop & check
Knives and linings	Regularly	Large amounts of air	Check & exchange
Lining a labyrinth	Regularly	Material leak	Stop & exchange
Bearing	Regularly	Grinding noises	Stop & check
Scraper	Regularly	Large gap between rotor and scraper	Stop & check



Preventive maintenance replacements help to avoid unexpected downtime due to material fatigue.

	Recommended frequency	Required quantity
Knives	6 months	1 set
Linings	1 year	1 set



Please scan the QR code to visit our Online Shop.

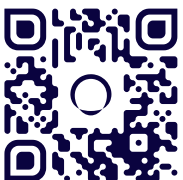
Qlar Online Shop

Our online platform offers a comprehensive selection of high-quality components designed to ensure the precision and reliability of your industrial weighing processes.

- +49 6151 1531 1531
- spareparts-eu@qlar.com
- shop.qlar.com/spare-parts



Qlar



Still questions? Contact us:
www.qlar.com/contact

02.25 · All information is given without obligation.
All specifications are subject to change.

Brochure number BVP10038EN
© Qlar, 2025

Qlar Europe GmbH
Pallaswiesenstraße 100
64293 Darmstadt, Germany

T: +49 61 51-15 31 0

sales-eu@qlar.com
www.qlar.com