



# olar

## Recommended spare parts for your maintenance plan

→ **MultiCell AF blow-through rotary valve**



Driving **circular**  
transformation

- Highest plant availability through quick replacement possibilities
- Easy replacement through modular design solution
- Spare units allow fastest issue resolution and quickest return on investment



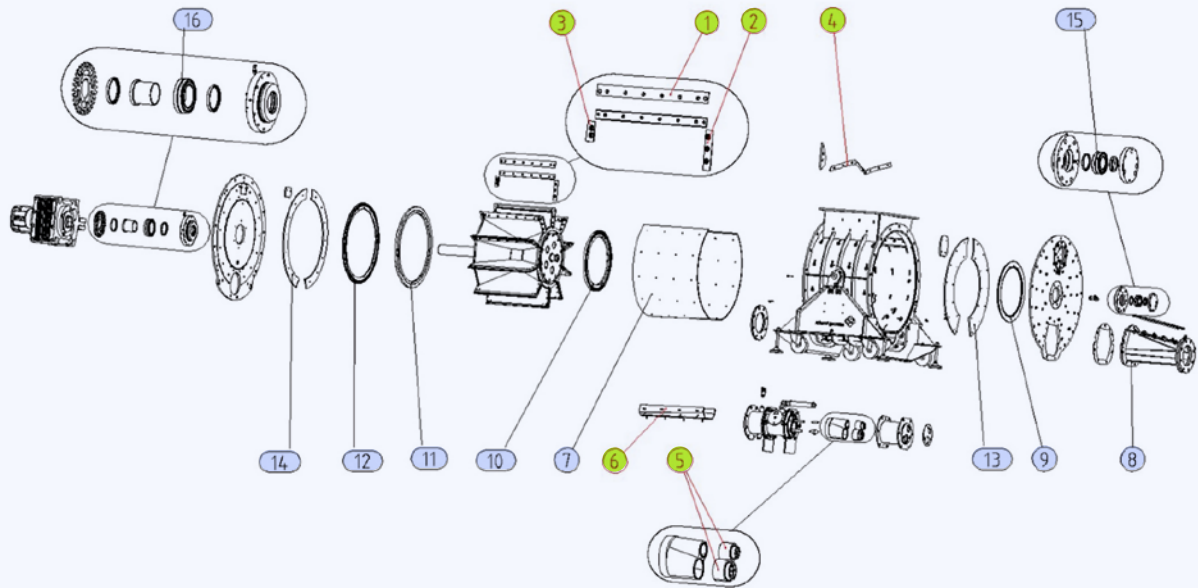
## Your MultiCell AF

The MultiCell AF blow-through rotary valve has been especially designed and developed for the in-line feeding of non-homogeneous alternative fuels into pneumatic conveying systems within the cement, lime, gypsum and power industries.

Robust in design and performance the MultiCell AF is capable of feeding a wide range of alternative fuels including shredded plastics, foil chips, conditioned sewage sludge, wood chips and saw meal, palm kernel shells, rice husk, animal meal and various mixed combinations.

The MultiCell AF blow-through rotary valve is used as a feeding device to directly feed of non-homogeneous alternative fuels into pneumatic conveying lines at conveying pressures of up to 350 mbar.

The geometry of the unit's inlet, chambers, conveying channel and outlet guarantee efficient material flow into the pneumatic conveying line thus a high material conveying to air ratio is achieved.



The **spare parts summary** provides a brief overview of recommended stock quantities to enable quick response times for your maintenance team and

highlights any critical spare parts. Any unforeseen defect of critical parts listed below will inhibit productive use of the equipment until the part is replaced.

|                              | Item number | Recommended stock quantities |                |
|------------------------------|-------------|------------------------------|----------------|
|                              |             | Spare parts                  | Critical parts |
| Hard seal knife              | 1           |                              | 1 set          |
| Side knives of bearing       | 2           |                              | 1 set          |
| Side knives of motor         | 3           |                              | 1 set          |
| Knives of scraper            | 4           |                              | 1 set          |
| Nozzles                      | 5           |                              | 1 set          |
| Lining of trough             | 6           |                              | 1 set          |
| Circular lining              | 7           | 1 set                        |                |
| Blow out socket              | 8           | 1 pc                         |                |
| Labyrinth 2                  | 9           | 1 pc                         |                |
| Labyrinth rotor bearing side | 10          | 1 pc                         |                |
| Labyrinth rotor motor side   | 11          | 1 pc                         |                |
| Labyrinth 1                  | 12          | 1 pc                         |                |
| Lining of bearing flange     | 13          | 1 set                        |                |
| Lining of motor flange       | 14          | 1 set                        |                |
| Bearing 2                    | 15          | 1 pc                         |                |
| Bearing 1                    | 16          | 1 pc                         |                |



# Maintenance summary

This **maintenance summary** provides a brief overview of inspection & maintenance actions. Please find any further details in the corresponding manual BVH2626.

**Inspection & maintenance intervals** should be followed carefully to ensure ideal operation of the equipment.

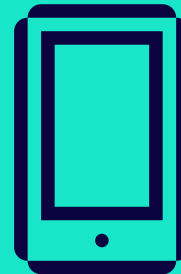
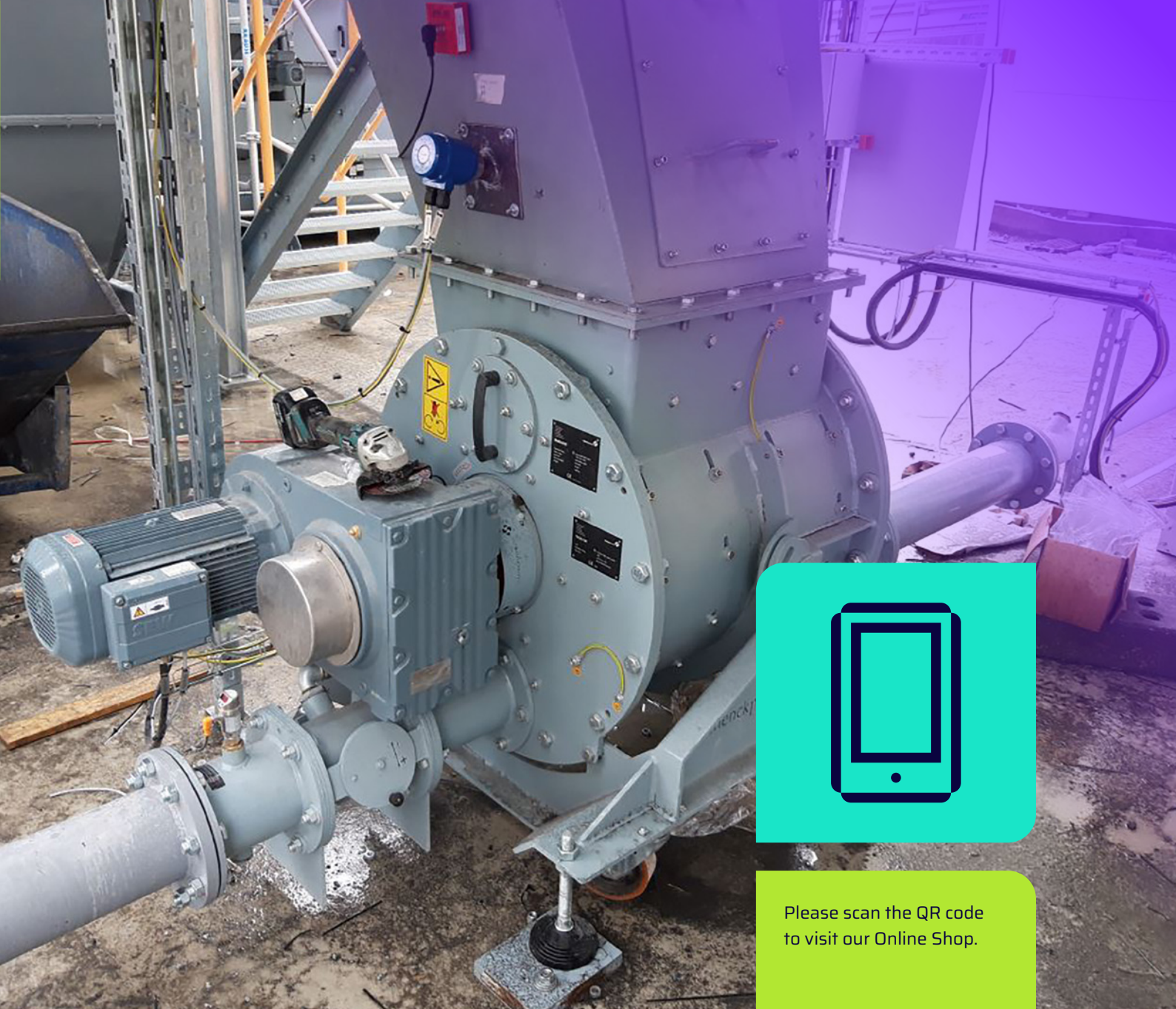
|                             | Recommended frequency | Trigger                             | Action           |
|-----------------------------|-----------------------|-------------------------------------|------------------|
| <b>Rotor and gear drive</b> | Regularly             | Grinding noises                     | Stop & check     |
| <b>Knives and linings</b>   | Regularly             | Large amounts of air                | Check & exchange |
| <b>Lining a labyrinth</b>   | Regularly             | Material leak                       | Stop & exchange  |
| <b>Bearing</b>              | Regularly             | Grinding noises                     | Stop & check     |
| <b>Scraper</b>              | Regularly             | Large gap between rotor and scraper | Stop & check     |



## Preventive maintenance replacements

help to avoid unexpected downtime due to material fatigue.

|                | Recommended frequency | Required quantity |
|----------------|-----------------------|-------------------|
| <b>Knives</b>  | 6 months              | 1 set             |
| <b>Linings</b> | 1 year                | 1 set             |

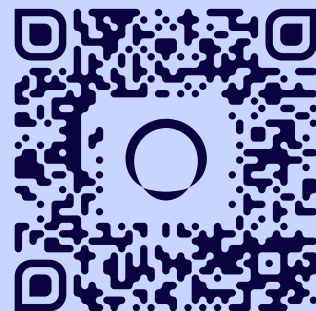


Please scan the QR code  
to visit our Online Shop.

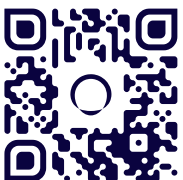
## Qlar Online Shop

Our online platform offers a comprehensive selection of high-quality components designed to ensure the precision and reliability of your industrial weighing processes.

- +49 6151 1531 1531
- [spareparts-eu@qlar.com](mailto:spareparts-eu@qlar.com)
- [shop.qlar.com/spare-parts](https://shop.qlar.com/spare-parts)



# Qlar



**Still questions? Contact us:**  
[www.qlar.com/contact](http://www.qlar.com/contact)

12.24 · All information is given without obligation.  
All specifications are subject to change.

Brochure number BVP10038EN  
© Qlar, 2024

Qlar Europe GmbH  
Pallaswiesenstraße 100  
64293 Darmstadt, Germany  
T: +49 61 51-15 31 0  
[sales-eu@qlar.com](mailto:sales-eu@qlar.com)  
[www.qlar.com](http://www.qlar.com)