

# Qlar



## Recommended spare parts for your maintenance plan

→ ProFlex C/F



Driving **circular**  
transformation

- Suitable for a wide range of applications
- Available in different sizes
- Multiscreen decks for efficient separation of different particle sizes



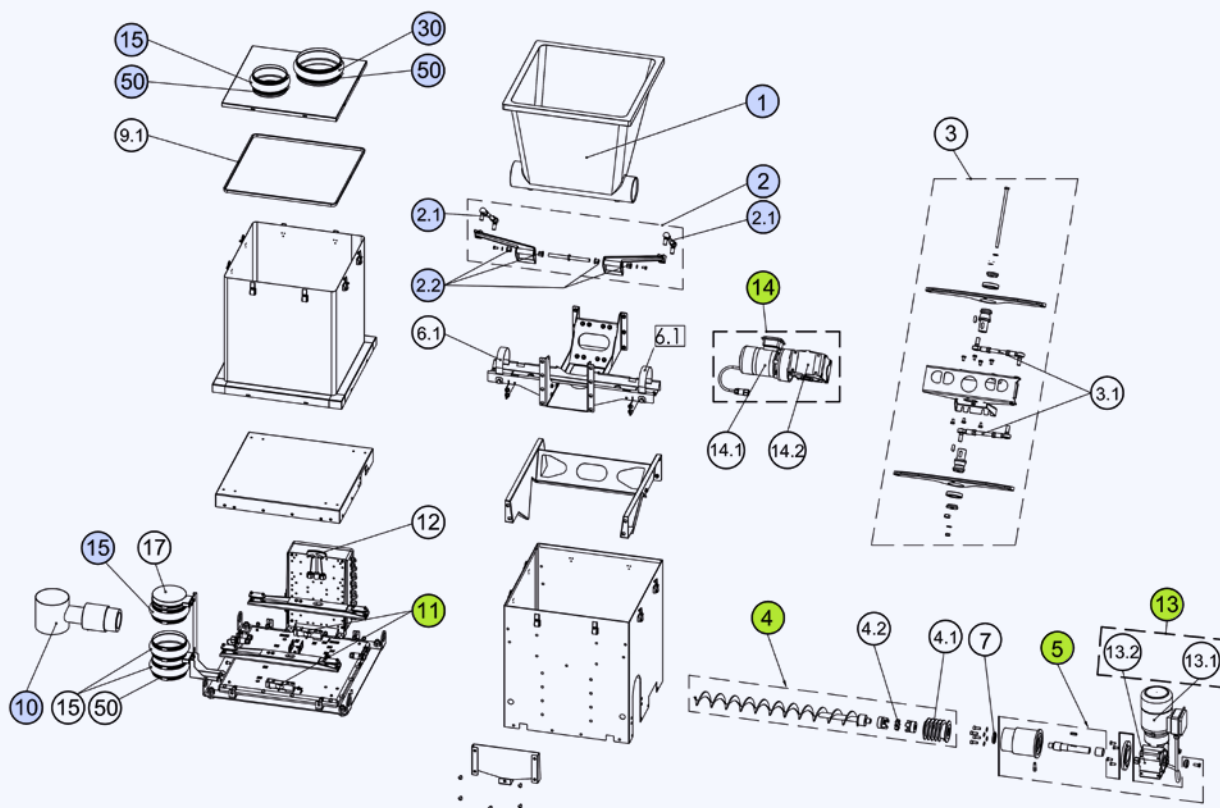
## Your ProFlex C/F

The ProFlex C/F feeder system is used for continuous volumetric feeding of bulk materials such as powders and granules.

The ProFlex screen is engineered with low maintenance in mind, with features such as self-aligning spherical roller bearings, self-cleaning

decks, and easy access to the screen deck for cleaning and maintenance.

The ProFlex screen can be customized to meet specific customer needs, with options such as side or end tensioning, multiple screen decks, and a range of screen media options.



The **spare parts summary** provides a brief overview of recommended stock quantities to enable quick response times for your maintenance team and

highlights any critical spare parts. Any unforeseen defect of critical parts listed below will inhibit productive use of the equipment until the part is replaced.

	Item number	Recommended stock quantities	
		Spare parts	Critical parts
Feed hopper	1	1 pc	
Paddle assembly	2 (incl 2.1, 2.2)	1 pc	
Discharging element	4		1 pc
Drive train order package	5		1 pc
Sealings	Various	1 set	
Vertical discharge assembly	10	1 pc	
Load cell PWS	11		1 pc
Gear Motor	13/14		1 pc
Flex. Connections	15	1 set	
Inlet / Ventilation opening	30/50		

# Maintenance summary

This **maintenance summary** provides a brief overview of inspection & maintenance actions. Please find any further details in the corresponding manual BVH 2467.

**Inspection & maintenance intervals** should be followed carefully to ensure ideal operation of the equipment.

	Recommended frequency	Trigger	Action
<b>Hopper &amp; Discharging Unit</b>	Regularly		Cleaning machine for inspection and maintenance
<b>Weighing Module</b>	Monthly	Improper feeder performance	Replace weighing module
<b>Drive Line</b>	During cleaning	Leakage of oil from gearbox	Replacement of drive line
<b>Discharge Element Subassembly</b>	During cleaning	Discharge is malfunctioning	Check drive line and discharge element
<b>Discharge Element</b>	During cleaning	Visible damage or malfunction	Replacement of discharge element
<b>Discharge Pipe</b>	During cleaning	Leakage of bulk solids	Replace discharge pipe
<b>Paddle Subassembly</b>	During cleaning	Bulk solids forms bridges / Paddles are barely touching hopper	Check subassembly and gearbox - replace if damaged

**Preventive maintenance replacements** help to avoid downtime due to material fatigue.

	Recommended frequency	Required quantity
<b>Sealings</b>	3 years or 25,000 hours	1 set
<b>Drive Line</b>	8 years	1 pc
<b>Bearings &amp; Lubricant</b>	3 years	1 set



Please scan the QR code  
to visit our Online Shop.

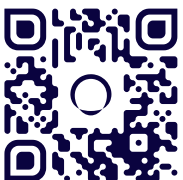
## Qlar Online Shop

Our online platform offers a comprehensive selection of high-quality components designed to ensure the precision and reliability of your industrial weighing processes.

- +49 6151 1531 1531
- [spareparts-eu@qlar.com](mailto:spareparts-eu@qlar.com)
- [shop.qlar.com/spare-parts](https://shop.qlar.com/spare-parts)



# Qlar



**Still questions? Contact us:**  
[www.qlar.com/contact](http://www.qlar.com/contact)

12.24 · All information is given without obligation.  
All specifications are subject to change.

Brochure number BVP10025EN  
© Qlar, 2024

Qlar Europe GmbH  
Pallaswiesenstraße 100  
64293 Darmstadt, Germany

T: +49 61 51-15 31 0

[sales-eu@qlar.com](mailto:sales-eu@qlar.com)  
[www.qlar.com](http://www.qlar.com)