

Qlar



Recommended spare parts for your maintenance plan

→ **MULTICOR S40/S80**



Driving **circular**
transformation

- **Consistent and precise dosing**
- **High accuracy due to advanced weighing technology with a wide range of materials**



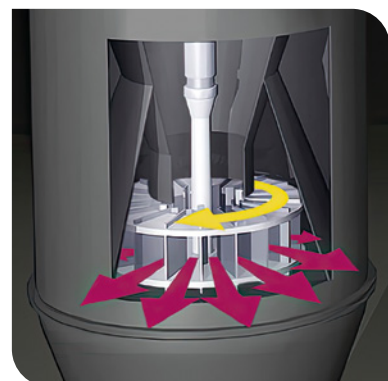
Your new **MULTICOR S40/S80**

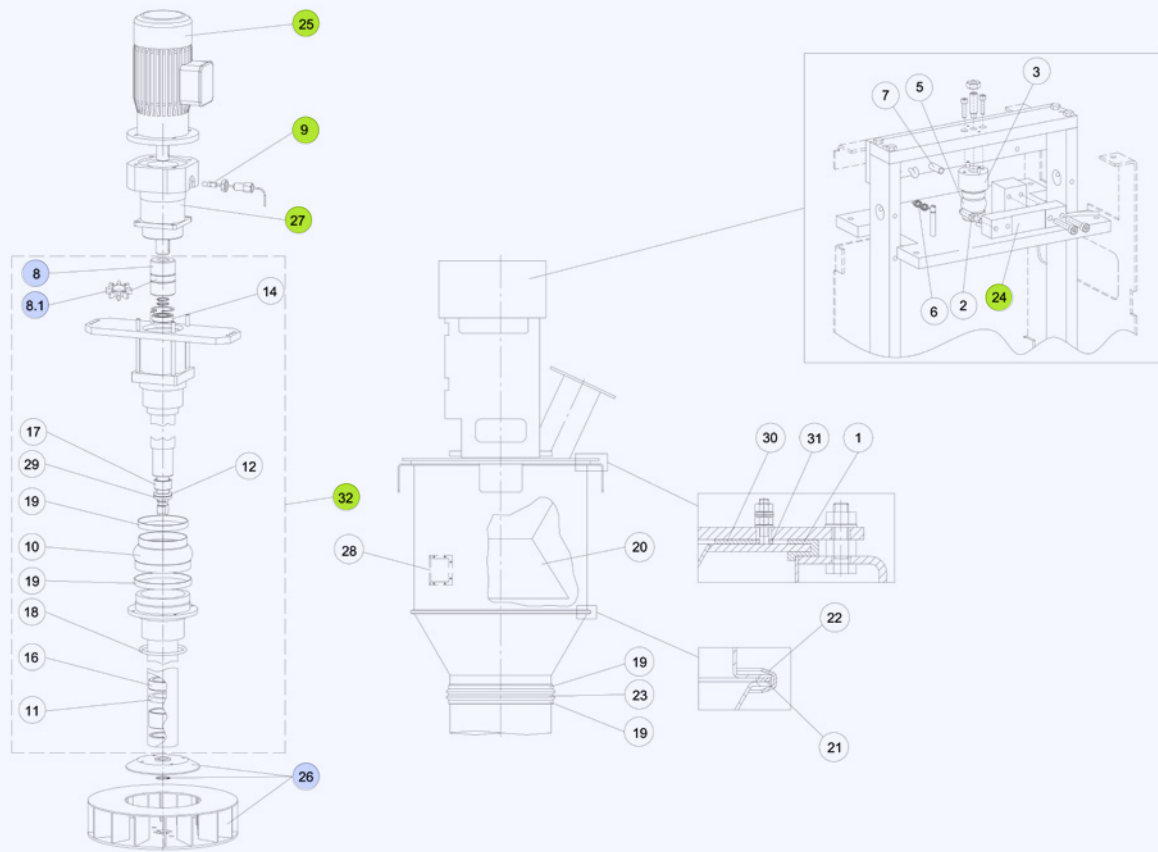
The MULTICOR S series offers solutions for applications using gravity to feed material into processes.

The MULTICOR S40 and S80 feeders have a compact design, making them suitable for use in small or confined spaces.

The MULTICOR S40 and S80 feeders feature a modular design that allows for easy maintenance and replacement of components, reducing downtime and increasing operational efficiency.

Purge air protects the shaft sealings against wear of abrasive material.





The **spare parts summary** provides a brief overview of recommended stock quantities to enable quick response times for your maintenance team and

highlights any critical spare parts. Any unforeseen defect of critical parts listed below will inhibit productive use of the equipment until the part is replaced.

	Item number	Recommended stock quantities	
		Spare parts	Critical parts
Measuring rotor	26	1 pc	
Sealings	Various	1 set	
Motor	25		1 pc
Reduction Gear	27*		1 pc
Coupling	8 (incl. 8.1)	1 pc	
Drive Train Complete	32		1 pc
Load Cell	24		1 pc
Proximity Switch	9		1 pc

* only for S80

Maintenance summary

This **maintenance summary** provides a brief overview of inspection & maintenance actions. Please find any further details in the corresponding manual FH 5442.

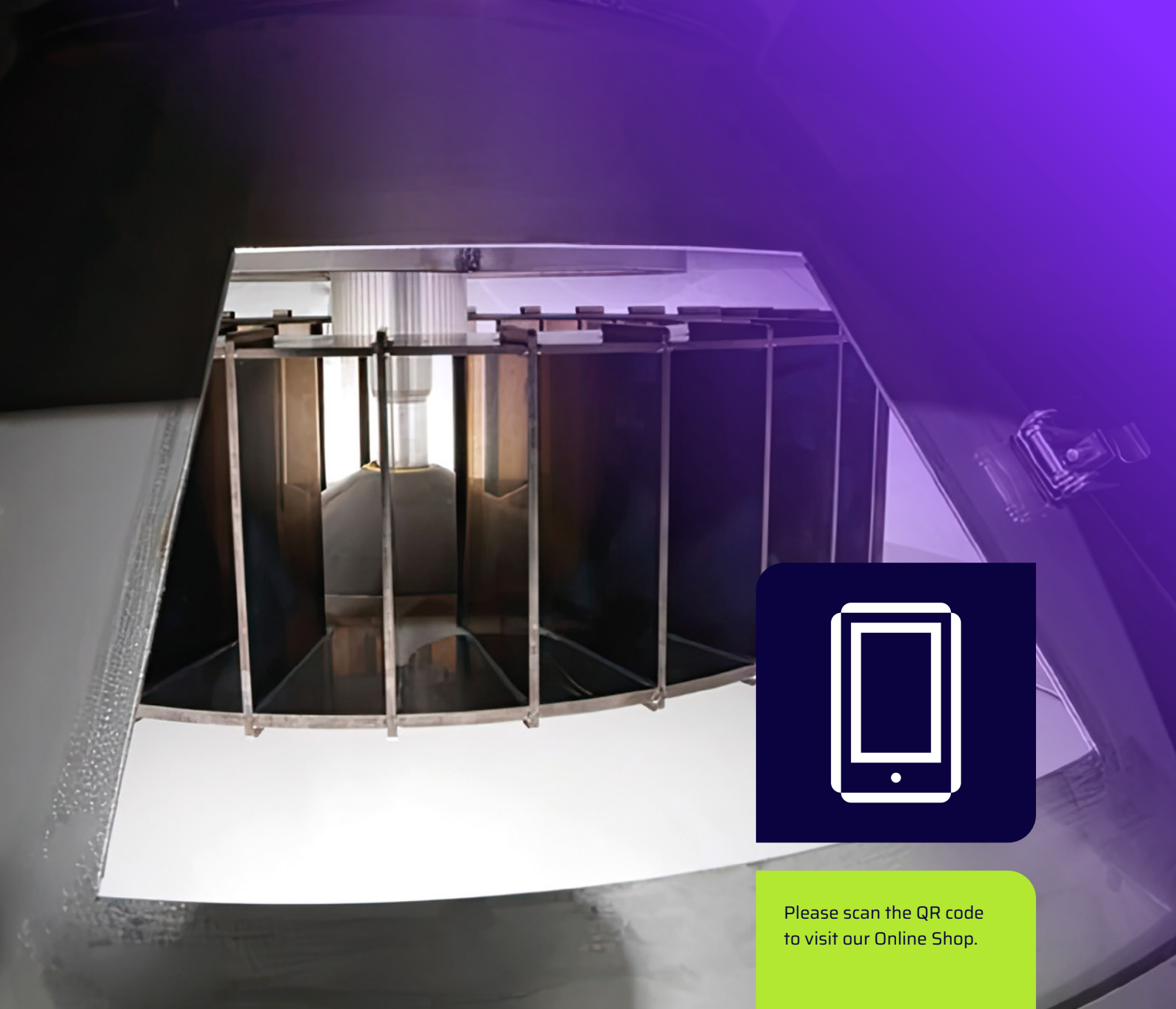
Inspection & maintenance intervals should be followed carefully to ensure ideal operation of the equipment.

	Recommended frequency	Trigger	Action
Measuring Wheel	Regularly	Clogging, wear or deformation	Cleaning, exchange
Housing, Flexible Connections	Regularly	Leakage	Stop & check
Drive Train	Regularly	Running noises	Stop & check
	2 years or 10,000 hours	Service time, material temperature	Relubrication
Reduction Gear	Regularly	Running noises, oil leakage, high temperature	Stop & check
Motor	Regularly	Running noises, high temperature	Stop & check
Coupling	Regularly	Running noises	Stop & check

Preventive maintenance replacements

not applied for ATEX versions, in this case follow instructions in BVH2248.

	Recommended frequency	Required quantity
Bearings Drive Train	6 years or 50,000 hours	1 set
Shaft Seal Rings	2 years or 10,000 hours	1 set
Flexible Connections	2 years or 10,000 hours	1 set



Please scan the QR code
to visit our Online Shop.

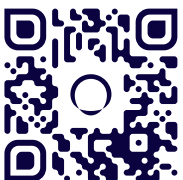
Qlar Online Shop

Our online platform offers a comprehensive selection of high-quality components designed to ensure the precision and reliability of your industrial weighing processes.

- +49 6151 1531 1531
- spareparts-eu@qlar.com
- shop.qlar.com/spare-parts



Qlar



Still questions? Contact us:
www.qlar.com/contact

12.24 · All information is given without obligation.
All specifications are subject to change.

Brochure number BVP10028EN
© Qlar, 2024

Qlar Europe GmbH
Pallaswiesenstraße 100
64293 Darmstadt, Germany

T: +49 61 51-15 31 0

sales-eu@qlar.com
www.qlar.com