



Qlar

Recommended spare parts for your maintenance plan

→ **MULTICOR H450-H1250**



Driving **circular**
transformation

- Consistent dosing due to advanced weighing technology
- Designed for feeding rates up to tons per hour

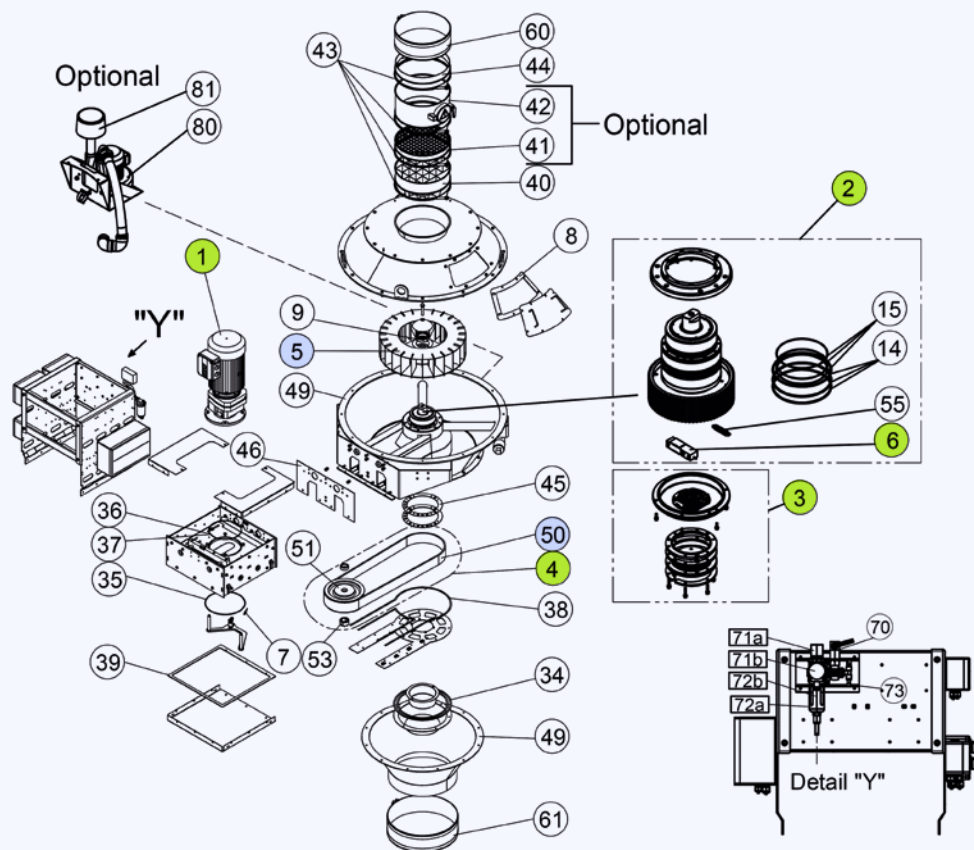


Your **MULTICOR H450-H1250**

The MULTICOR H Coriolis mass flow meter is a closed measuring system for continuous totalized amount of material and feed rate acquisition.

The Multicor H450 feeder uses advanced weighing technology to accurately measure and control the feed rate of bulk materials, ensuring precise and consistent dosing.

The Multicor H450 feeder features a modular design that allows for easy maintenance and replacement of components, reducing downtime and increasing operational efficiency.



The **spare parts summary** provides a brief overview of recommended stock quantities to enable quick response times for your maintenance team and

highlights any critical spare parts. Any unforeseen defect of critical parts listed below will inhibit productive use of the equipment until the part is replaced.

	Item number	Recommended stock quantities	
		Spare parts	Critical parts
Measuring Wheel	5	1 pc	
Sealings	Various	1 set	
Geared Motor	1		1 pc
Belt Drive Complete	4		1 pc
Belt	50	1 pc	
Drive Train Complete	2		1 pc
Grease for Drive Train	/	1 pc	
Load Cell	6		1 pc
Telemetry Unit	3		1 pc

Maintenance summary

This **maintenance summary** provides a brief overview of inspection & maintenance actions. Please find any further details in the corresponding manual BVH 2621.

Inspection & maintenance intervals should be followed carefully to ensure ideal operation of the equipment.

	Recommended frequency	Trigger	Action
Measuring Wheel	Regularly	Clogging, wear, deformation	Cleaning, exchange
Housing, Flexible Connections	Regularly	Leakage	Stop & check
Belt Drive	Regularly	Running noises, wear	Stop & check
Drive Train	Regularly	Running noises	Stop & check
	1-2 years	Service time, material temperature	Relubrication
Geared Motor	Regularly	Running noise, oil leakage, cleaning, high temperature	Stop & check
	2-3 years or 20,000 hours	Service time	Exchange lubricant

Preventive maintenance replacements help to avoid downtime due to material fatigue.

	Recommended frequency	Required quantity
Drive Train	6 years or 50,000 hours	1 pc
Belt Drive	3 years or 25,000 hours	1 set



Please scan the QR code
to visit our Online Shop.

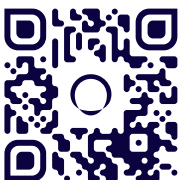
Qlar Online Shop

Our online platform offers a comprehensive selection of high-quality components designed to ensure the precision and reliability of your industrial weighing processes.

- +49 6151 1531 1531
- spareparts-eu@qlar.com
- shop.qlar.com/spare-parts



Qlar



Still questions? Contact us:
www.qlar.com/contact

12.24 · All information is given without obligation.
All specifications are subject to change.

Brochure number BVP10023EN
© Qlar, 2024

Qlar Europe GmbH
Pallaswiesenstraße 100
64293 Darmstadt, Germany

T: +49 61 51-15 31 0

sales-eu@qlar.com
www.qlar.com