

## FulFiller – CFF Container Loading System



- **High-speed bulk loading system for ISO Containers**
- **Fixed frame for dedicated container loading silos**
- **Simple operation, low power consumption, easy maintenance**
- **Maximises container loads and minimises loading time**

### Application

The FulFiller container loading system is used to load bulk granular products into standard ISO containers. The CFF, Customer Fixed Frame version is designed for dedicated silos that are always used for outloading materials into containers. The container trailer is reversed up to the FulFiller before connections are made and the loading commences.

For variable container / trailer heights, an optional lift can be supplied to adjust the thrower height. Mis alignment of the Container and FulFiller can be prevented by use of an optional turntable.

The use of ISO containers for shipping bulk products is widespread – typical industries are polyolefin plants, sugar refiners / shippers, the grain and soya industries and chemical plants.

### Construction

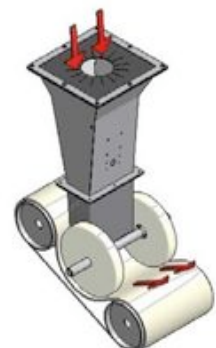
The FulFiller CFF comprises three main parts: The belt thrower assembly comprising drive, main pulleys and idlers, throwing belt, inlet hopper and product baffle, outlet section and liner inflation fan. Product contact parts are supplied in stainless steel or food grade rubber; other parts are painted carbon steel.

The control system comprising main panel containing all necessary power and control circuits, and Siemens PLC three phase power socket for ancillary equipment. A fitted 10 m cable and plug allows power connection to a local 3 phase supply.

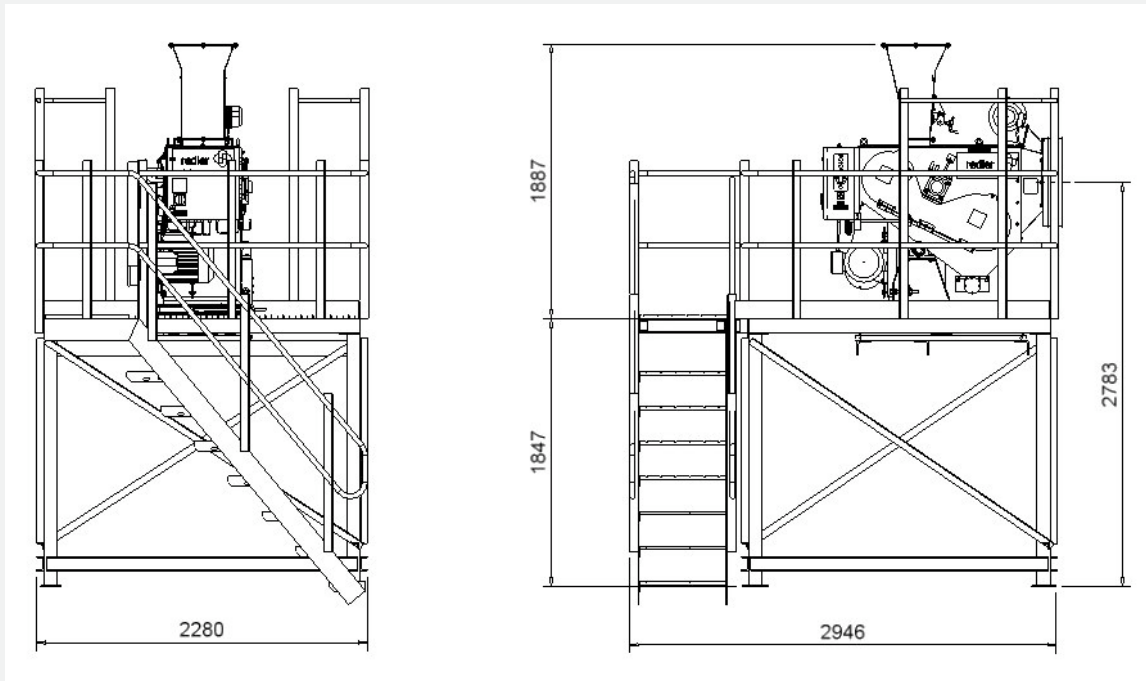
A carbon steel painted heavy-duty frame complete with access platform and railing supplied to match your required height.

### Operating Principle

The FulFiller uses a throwing belt that is supported on two rollers and rotates at high speed. The material being loaded falls onto the belt, is accelerated through 90° and thrown from the loader into the container. The throwing action does not damage the material and is therefore ideal for all pellets and granules.

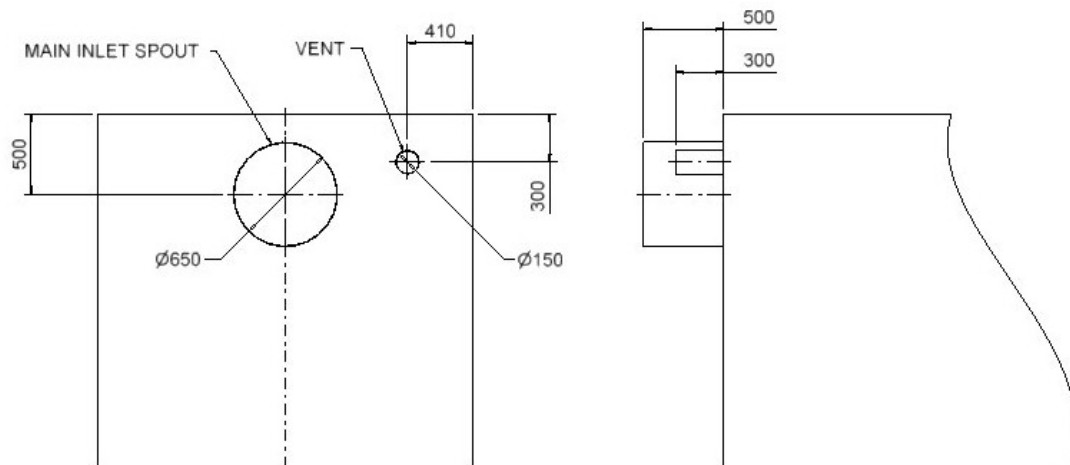


## Dimensions (mm)



## Container Liner Information

For containers using liners, the design should use these dimensions:



OUTLETS TO SUIT  
CUSTOMER REQUIREMENTS

## Technical Data

Maximum loading rate	240 m <sup>3</sup> /hr dependent on material and physical arrangement
Main drive motor	11 kW
Control	Via Siemens PLC
Operating conditions	0° – 45°C ambient
Weight	1140 kg
Optional Item – Hydraulic Lift	Hydraulic lift table to allow adjustment of the thrower height to suit varying trailer / container configurations. Powered from the standard control panel.
Optional Item – Turntable	Slewing turntable to allow adjustment of throwing direction when the container and FulFiller are not ideally positioned.
Utility requirements	3 phase 380 – 460V 50/60 Hz supply. Unit supplied with cable and plug.

## Product Suitability

Most granular or pellet products can be loaded using the FulFiller depending on particle size and material density. Particles should ideally be homo-geneous and in the range of 1 – 25mm. Bulk density of the product should lie within the range 400 – 1200 kg/m<sup>3</sup>. Very dusty products will not be loaded satisfactorily. Typical products are plastic pellets, refined sugar, grains, soya beans, animal meal (pellets), wood chips / pellets, rice, clay pellets.

## Special Requirements

For special applications, the FulFiller can be adapted. Please contact us to discuss applications where the standard product may not be suitable.

## Enquiry / Order Data

In order to process your order please provide the following information:

- Material details including bulk density, particle size, moisture content
- Details of feed arrangement
- Required loading rate (lorry turnaround time)
- Sizes of container to be loaded
- Dimensions required for frame height – and any variability
- Any special environmental factors

### **Schenck Process UK Limited**

Carolina Court, Lakeside  
Doncaster, South Yorkshire  
DN4 5RA UK

T +44 (0) 1302 321313  
F +44 (0) 1302 554400  
enquiries@schenckprocess.co.uk  
www.schenckprocess.co.uk

### **Schenck Process UK Limited**

Canalside Court  
Stonehouse Business Park  
Sperry Way, Glos GL10 3UT

T +44 (0) 1453 763 611  
F +44 (0) 1453 763 582  
sales@redler.com  
www.schenckprocess.co.uk

### **Schenck Process GmbH**

Pallaswiesenstraße 100  
64293 Darmstadt  
Germany

T +49 61 51-15 310  
F +49 61 51-15 31 11 72  
sales@schenckprocess.com  
www.schenckprocess.com